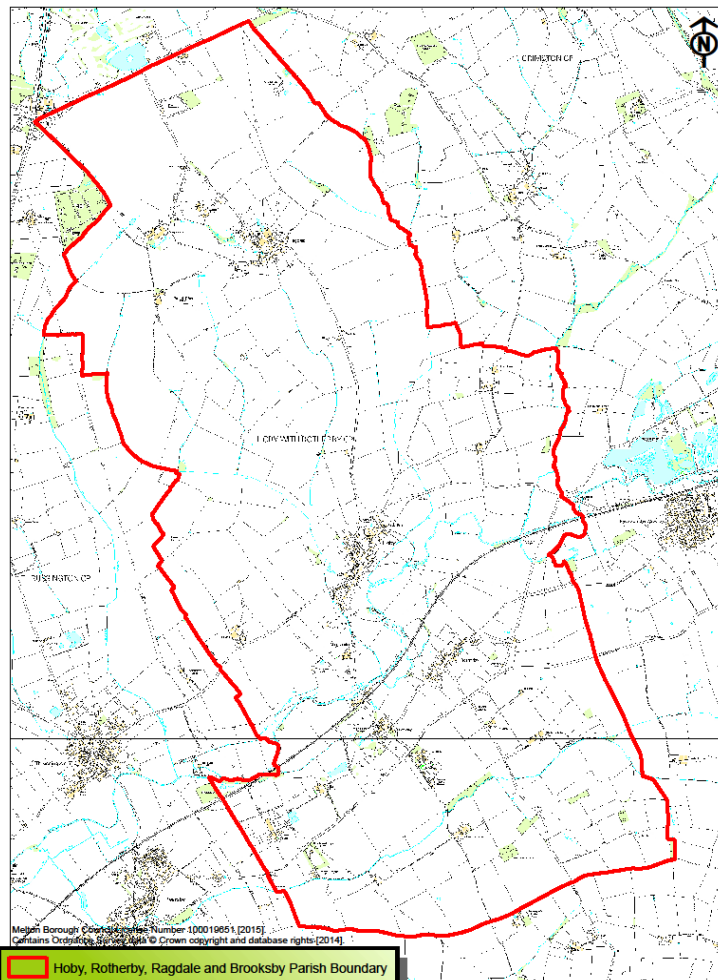


NEIGHBOURHOOD PLANNING

Your Chance to Help Plan the Future
Development of the Parish.

Hoby, Rotherby, Ragdale and Brooksby Parish



0 0.5 1 2 Kilometers



HOBY WITH ROTHERBY PARISH NEIGHBOURHOOD PLAN

Hoby, Rotherby, Ragdale and Brooksby

PUBLIC INFORMATION EVENING

7.30PM

MONDAY 15th FEBRUARY 2015

Hoby & District Village Hall

By invitation of Hoby with Rotherby
Parish Council

Your chance to find out..

- *What 'Neighbourhood Planning' is all about*
- *The steps to creating a Neighbourhood Plan*
- *How you can get involved*

Further information can be found on the Parish Council website
or by contacting the Clerk to the Parish Council on 01664 434697

<http://hobyrotherbyragdaleandbrooksby.leicestershireparishcouncils.org>

HOBY WITH ROTHERBY PARISH NEIGHBOURHOOD PLAN

Hoby, Rotherby, Ragdale and Brooksby



What is Neighbourhood Planning?

Neighbourhood planning is a new process within the reformed Town and Country Planning System agreed by Government through the Localism Act which provides the community with an opportunity to influence the planning and development of their area by producing a statutory planning document which once made will be used to help inform decisions in relation to future planning applications across the parish.

The Neighbourhood Plan will allow those, who live, work and have a business in the area to have a say on:

- The most appropriate places for new homes, shops, offices, leisure facilities and other developments to be located.
- What type of development is needed and what it should look like.
- Which important green spaces and other important areas should be protected.
- What improvements or additions to local facilities and services will be required alongside any development.

Why are we producing a plan?

The planning system helps decide what gets built, where and when. In theory, planning has always supposed to give local communities a say in decisions that affect them, however, in practice, people have often found it hard to get their voice heard.

The Neighbourhood Planning process will result in the production of a legally recognised document which will be used to ensure that the needs, views and priorities of the local community are fully considered when assessing future planning applications and proposed developments within the area.

A Neighbourhood Plan will provide a great opportunity for you to have more influence on how Hoby with Rotherby Parish will change over time. Your local knowledge and good sense of what should be protected and what needs to change can now really make a difference.

Who is producing the plan?

Hoby with Rotherby Parish Council has resolved to produce a Neighbourhood Plan with the support of a working party of local volunteers known as the **Hoby with Rotherby Plan Group**, and will consist of a Steering Group and a number of Working Groups.

The success of the plan will rely on ongoing input and support from local residents, businesses, land owners, and other organisations active within the parish.

Opportunities will be provided for ALL members of the community across Hoby, Rotherby, Brooksby and Ragdale to engage in and inform the production of the plan.